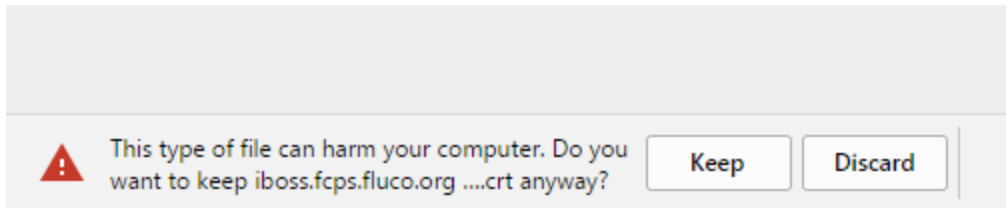
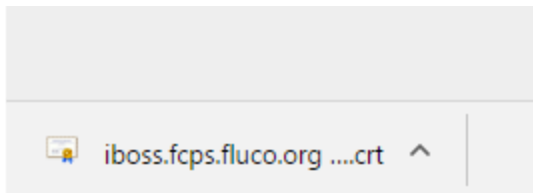


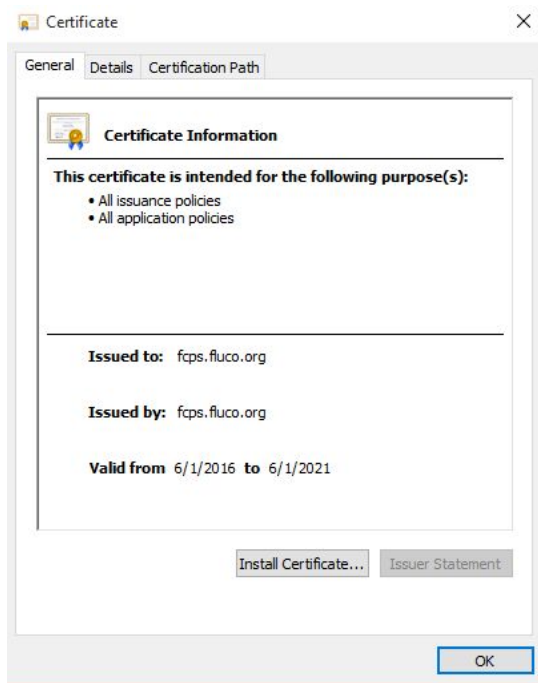
1. Download the certificate from the following link:
<http://fluco.org/tech/downloads/iboss.fcps.fluco.org.crt>
2. You may get a warning similar to this:



3. Click on the download and select open.



4. An new pop-up will open to start the install wizard. Click install.



5. Either selection will work, but you will need administrative rights to your device if you would like to install it to the local computer. Make your selection and hit "Next".

← Certificate Import Wizard

Welcome to the Certificate Import Wizard

This wizard helps you copy certificates, certificate trust lists, and certificate revocation lists from your disk to a certificate store.

A certificate, which is issued by a certification authority, is a confirmation of your identity and contains information used to protect data or to establish secure network connections. A certificate store is the system area where certificates are kept.

Store Location

Current User

Local Machine

To continue, click Next.

Next

Cancel

6. Choose the "Place all certificates in the following store" and click Browse.

← Certificate Import Wizard

Certificate Store

Certificate stores are system areas where certificates are kept.

Windows can automatically select a certificate store, or you can specify a location for the certificate.

- Automatically select the certificate store based on the type of certificate
- Place all certificates in the following store

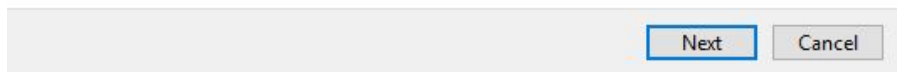
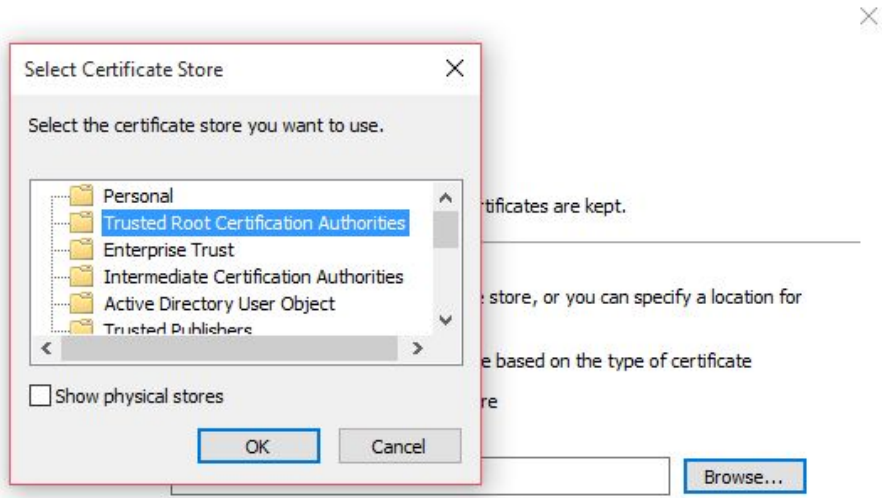
Certificate store:

Browse...

Next

Cancel

7. Select "Trusted Root Certificate" folder, and click "OK" and then "Next."



8. Select Finish.

